



LEARN HOW TO FOLD: THE FLYNN FLYER

Follow the folds in numerical order on both sides of the paper

- — indicates an inward (valley) fold
- indicates an outward (Mt.) fold

FLY WITH CARE

1 STEP 1
Fold down.
Proceed to Step 2

THE FLYNN FLYER

5 STEP 5
Fold wing down.
Match on other side.
Unfurl to create a positive
dyhedral angle on wings

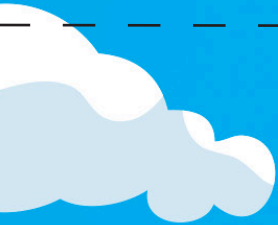
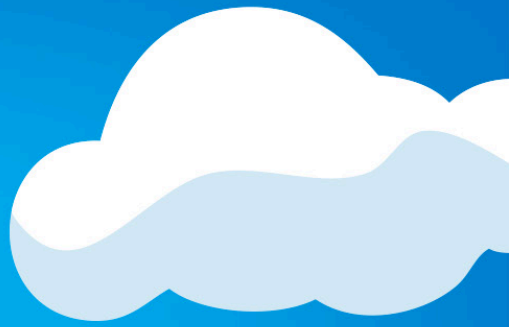
5 STEP 5
Fold wing down.
Match on other side.
Unfurl to create a positive
dyhedral angle on wings

6 LASTLY

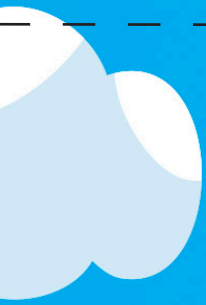
Fold both winglets.
Unfurl to be perpendicular to the wing



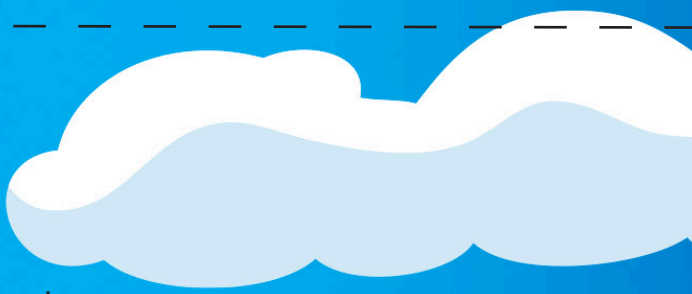
6 LASTLY
Fold both winglets.
Unfurl to be perpendicular to the wing



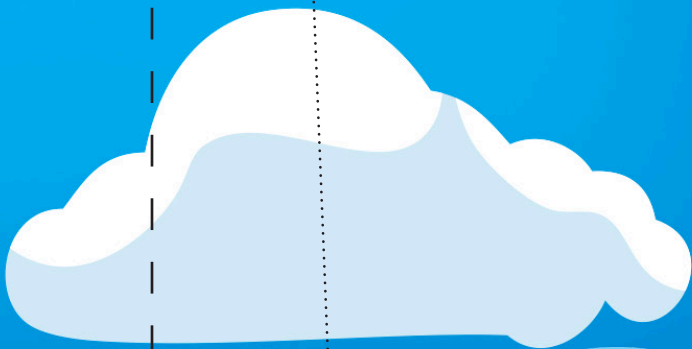
2 START
Fold down
Proceed to Step 3



3 STEP 3
Again, fold down
Proceed to Step 4



4



4 STEP 4
Fold in half.
Proceed to Step 5

